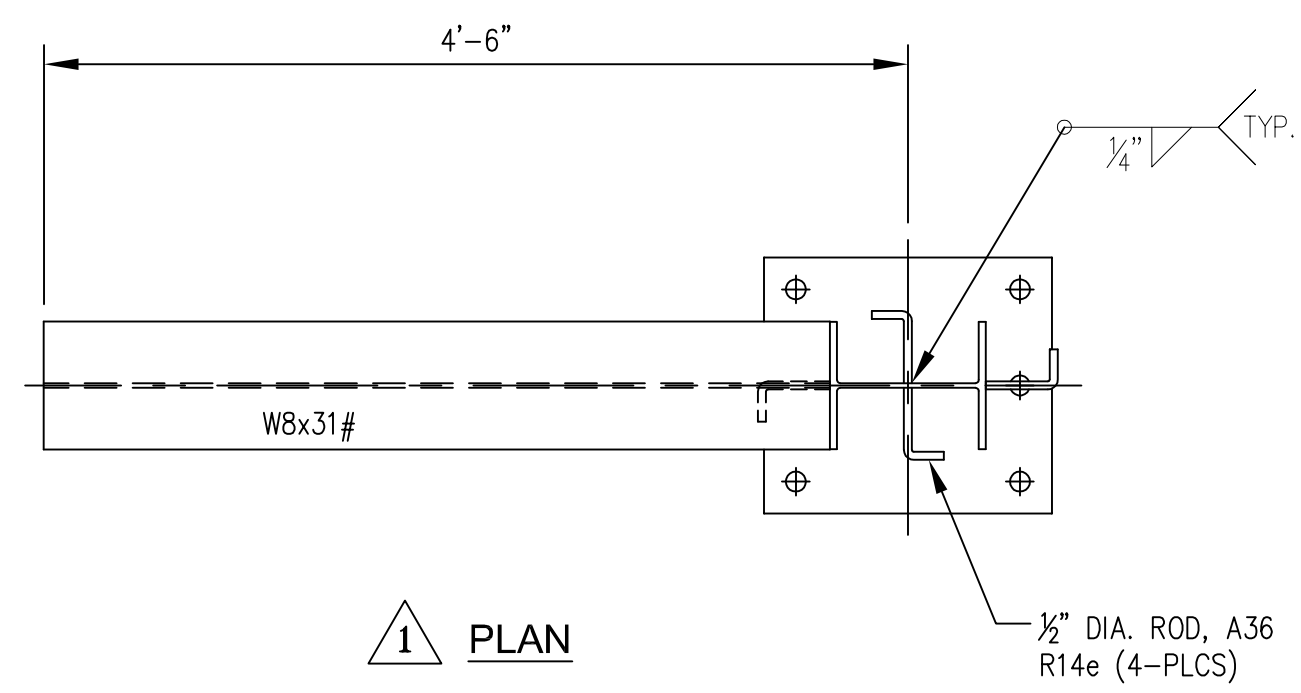
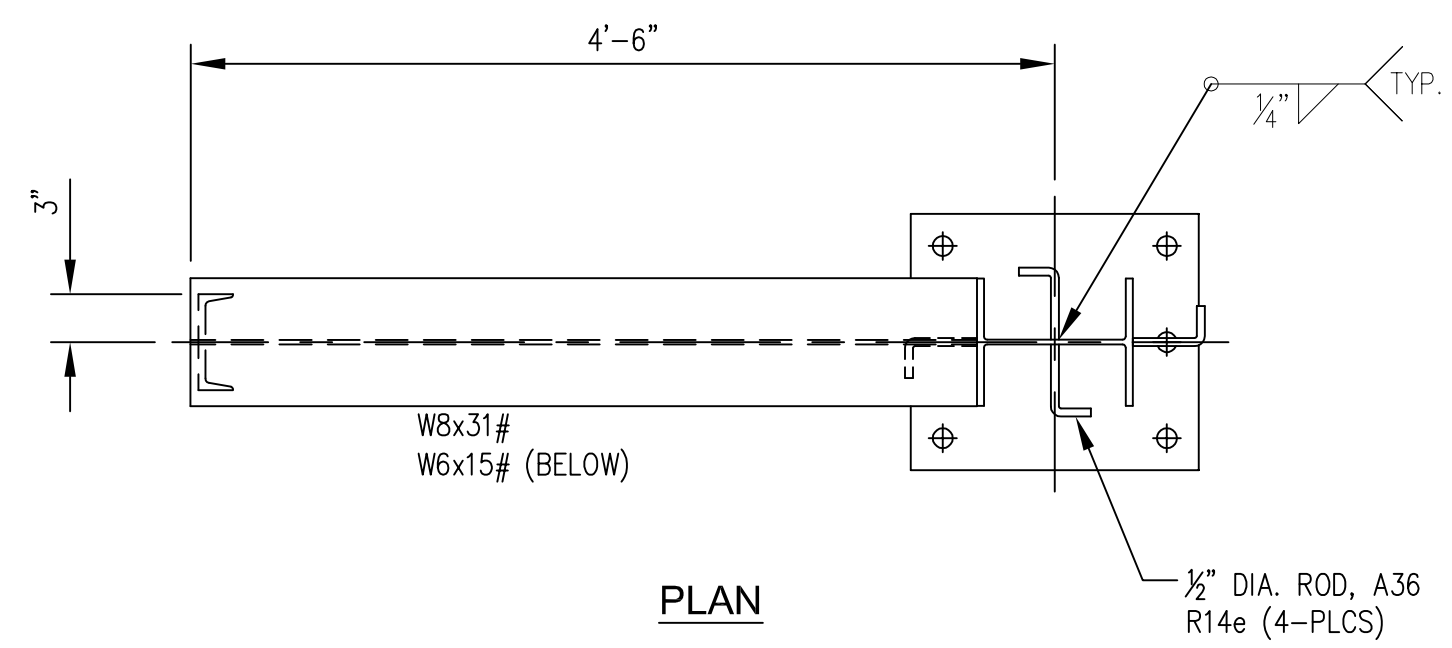


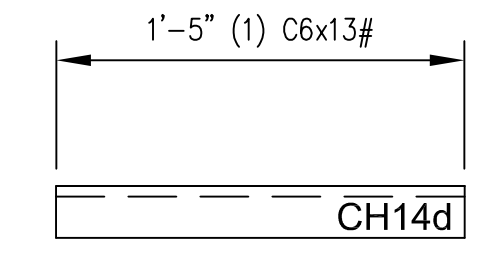
PAINTED STEEL



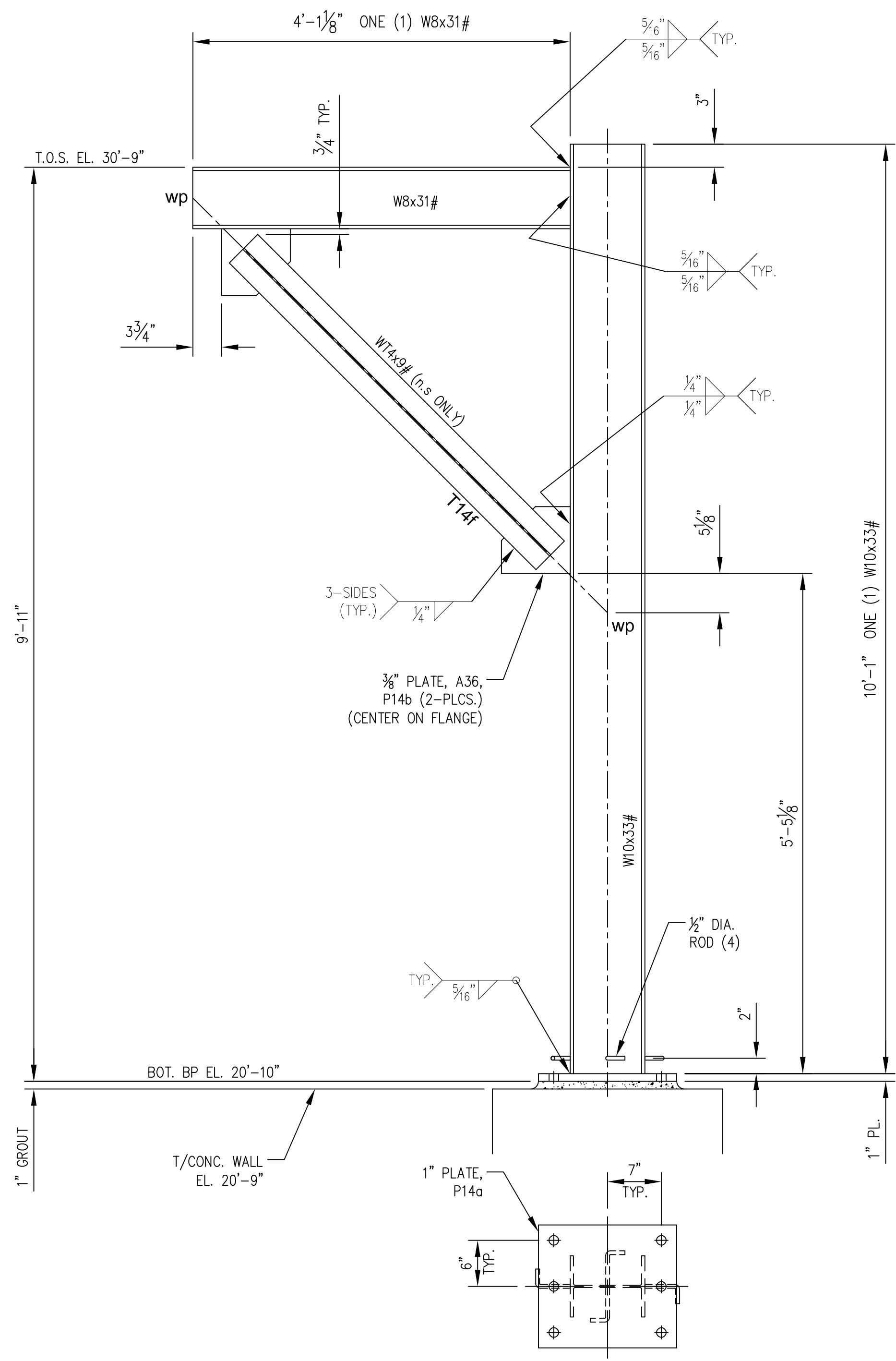
1 PLAN
SCALE: 1/2"=1'-0"



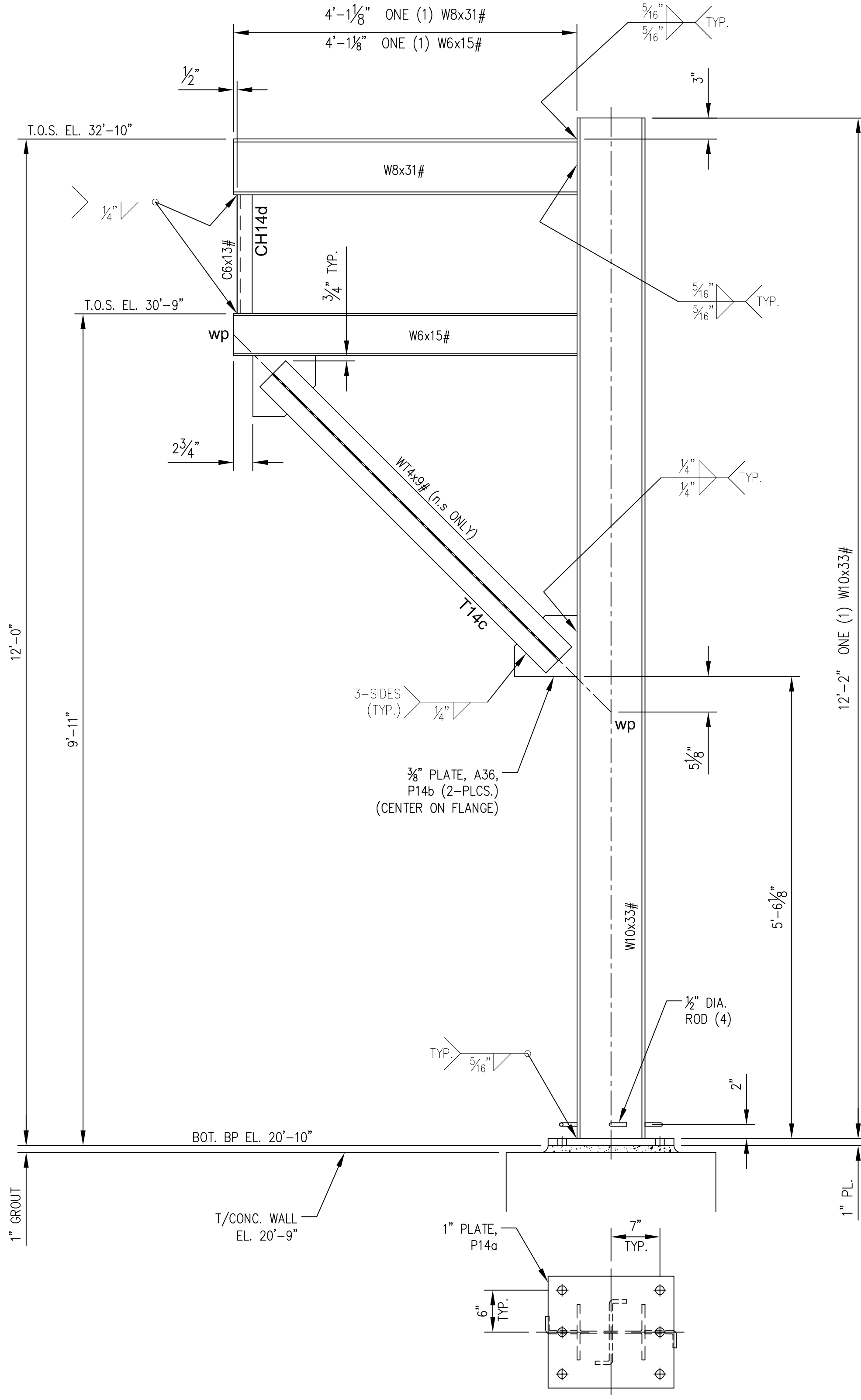
PLAN
SCALE: 1/2"=1'-0"



1 CHANNEL
C6"x 13# x 1'-5", A36
(1) REQ'D, CH14d
SCALE: 1/2"=1'-0"



1 SUPPORT
SP-1
(1) REQ'D
SCALE: 1"=1'-0"



1 SUPPORT
SP-2
(1) REQ'D
SCALE: 1"=1'-0"

GENERAL NOTES:

- ALL STRUCTURAL STEEL SHALL BE DETAILED, FURNISHED AND FABRICATED IN ACCORDANCE WITH THE FOLLOWING:
 - AMERICAN INSTITUTE OF STEEL CONSTRUCTION (AISC) "CODE OF STANDARD PRACTICE FOR STRUCTURAL STEEL BUILDINGS AND BRIDGES", LATEST EDITION
 - AMERICAN INSTITUTE OF STEEL CONSTRUCTION (AISC) "STEEL CONSTRUCTION MANUAL, 13TH EDITION"
- STRUCTURAL STEEL MEMBERS SHALL CONFORM TO THE FOLLOWING REQUIREMENTS:
 - ALL W AND WT SHAPES: ASTM A992 Gr. 50
 - ALL CHANNELS AND ANGLES: ASTM A36
 - PLATES: ASTM A36
- ALL WELDING SHALL BE IN ACCORDANCE WITH AMERICAN WELDING SOCIETY D1.1 "STRUCTURAL WELDING CODE-STEEL (2010)". ALL SMAW ELECTRODES SHALL BE E70XX. ALL FCAW WIRE SHALL BE E71T-1.
- ALL WELDING SHALL BE PERFORMED BY WELDERS CURRENTLY QUALIFIED TO AMERICAN WELDING SOCIETY (AWS) D1.1 "STRUCTURAL WELDING CODE-STEEL (2010)" REQUIREMENTS.
- ALL STRUCTURAL STEEL SHALL BE CLEANED PER SSPC-SP-2 (HAND TOOL) THEN SHALL RECEIVE TWO (2) SHOP COATS OF RUST-OLEUM 9100 SYSTEM HIGH PERFORMANCE INDUSTRIAL DTM EPOXY MASTIC TO 5.0-8.0 MILS D.F.T TOTAL (COLOR: SAFETY YELLOW).

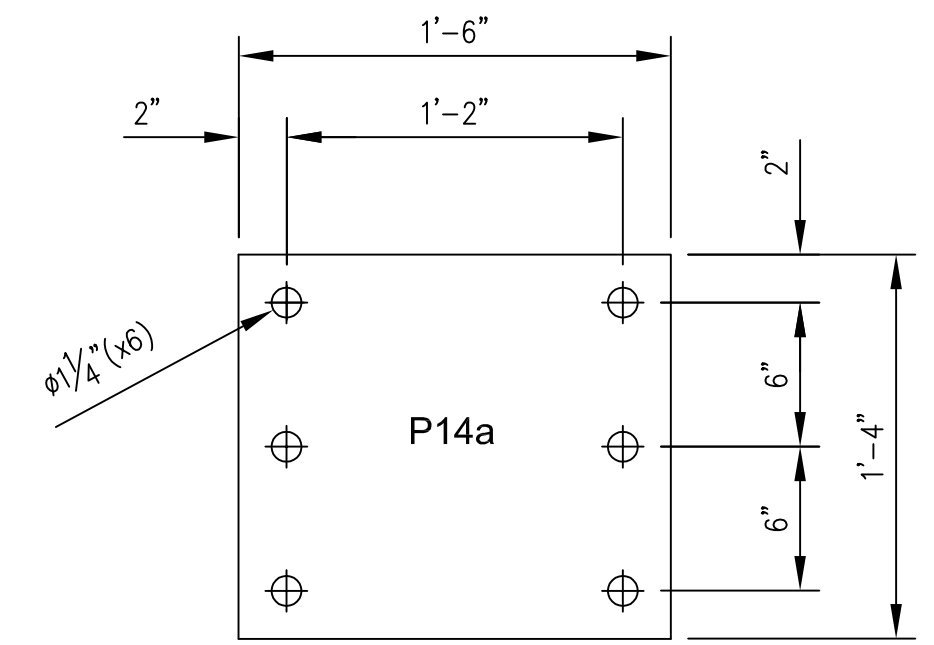


PLATE
1" THK., A36
(2) REQ'D, P14a
SCALE: 1/2"=1'-0"

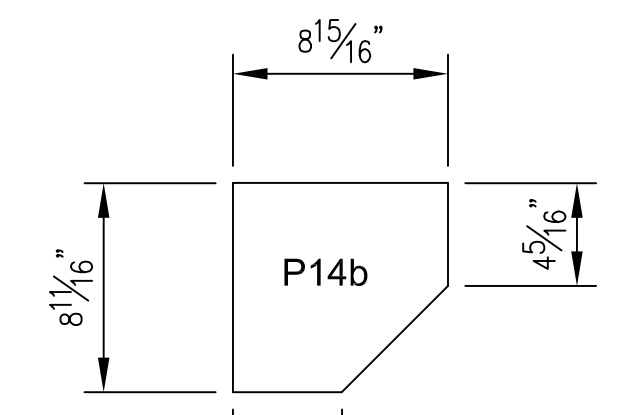
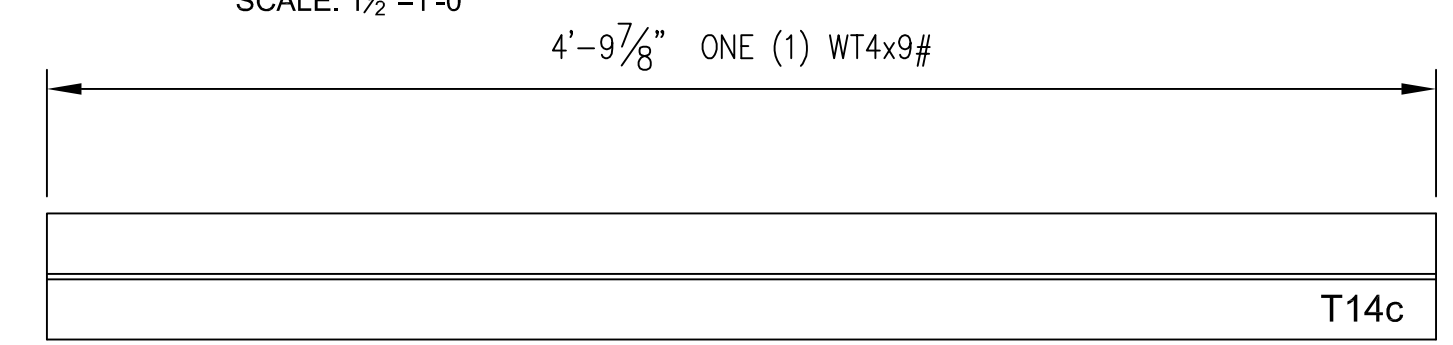
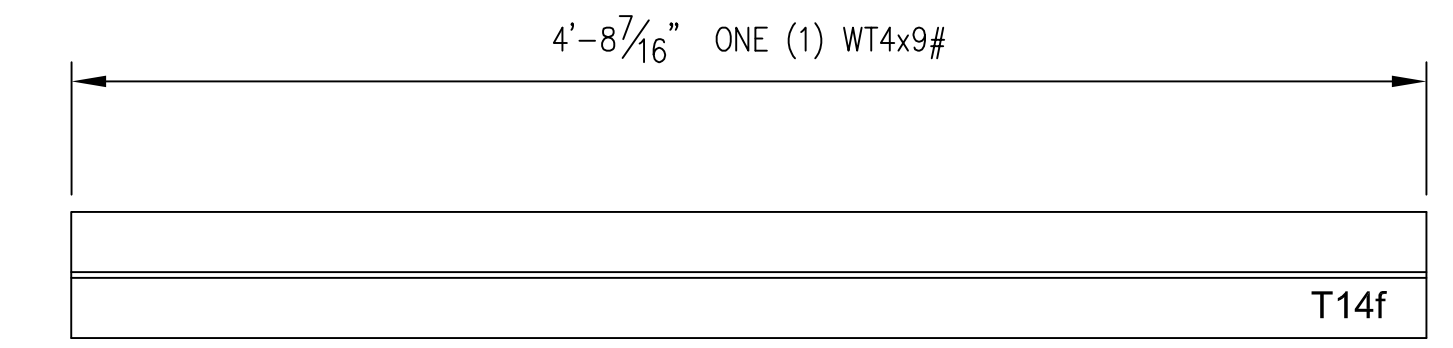


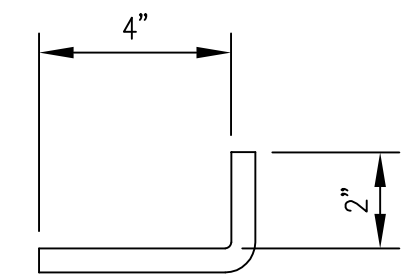
PLATE
3/8" THK., A36
(4) REQ'D, P14b
SCALE: 1/2"=1'-0"



TEE
WT4"x 9# x 4'-9 7/8", A992 GR. 50
(1) REQ'D, T14c
SCALE: 1/2"=1'-0"



TEE
WT4"x 9# x 4'-8 7/16", A992 GR. 50
(1) REQ'D, T14f
SCALE: 1/2"=1'-0"



ROUND BAR
1/2" DIA., A36
(8) REQ'D, R14e
SCALE: 1/2"=1'-0"

REV.	DATE	DESCRIPTION	BY
1	01/29/16	REV. PER CLIENT. ISSUED FOR FAB.	PD
0	01/26/16	ISSUED FOR APPROVAL	PD

ARCHER DAY
18 MILEED WAY
AVENEL, NJ 07001
TEL: 732.417.0333
FAX: 732.396.4533
www.archerday.com

PROJECT: PIPE SUPPORT SP-1 AND SP-2

TITLE: PIPE SUPPORT SP-1 AND SP-2

DRAWN BY: PD DATE: 01/22/2016
APPROVED: SCALE: AS SHOWN

DWG. NO. 7047-14 REV. 1